



**PHOTOS BY  
ALEXANDER GARDNER**

**COURTESY OF THE KANSAS STATE  
HISTORICAL SOCIETY**

**PUBLIC LIBRARY**

**...The World's Nicest Library**

**These photographs, taken in  
and around Tonganoxie by  
Alexander Gardner in 1867, are  
presented courtesy of the  
Kansas State Historical Society.**

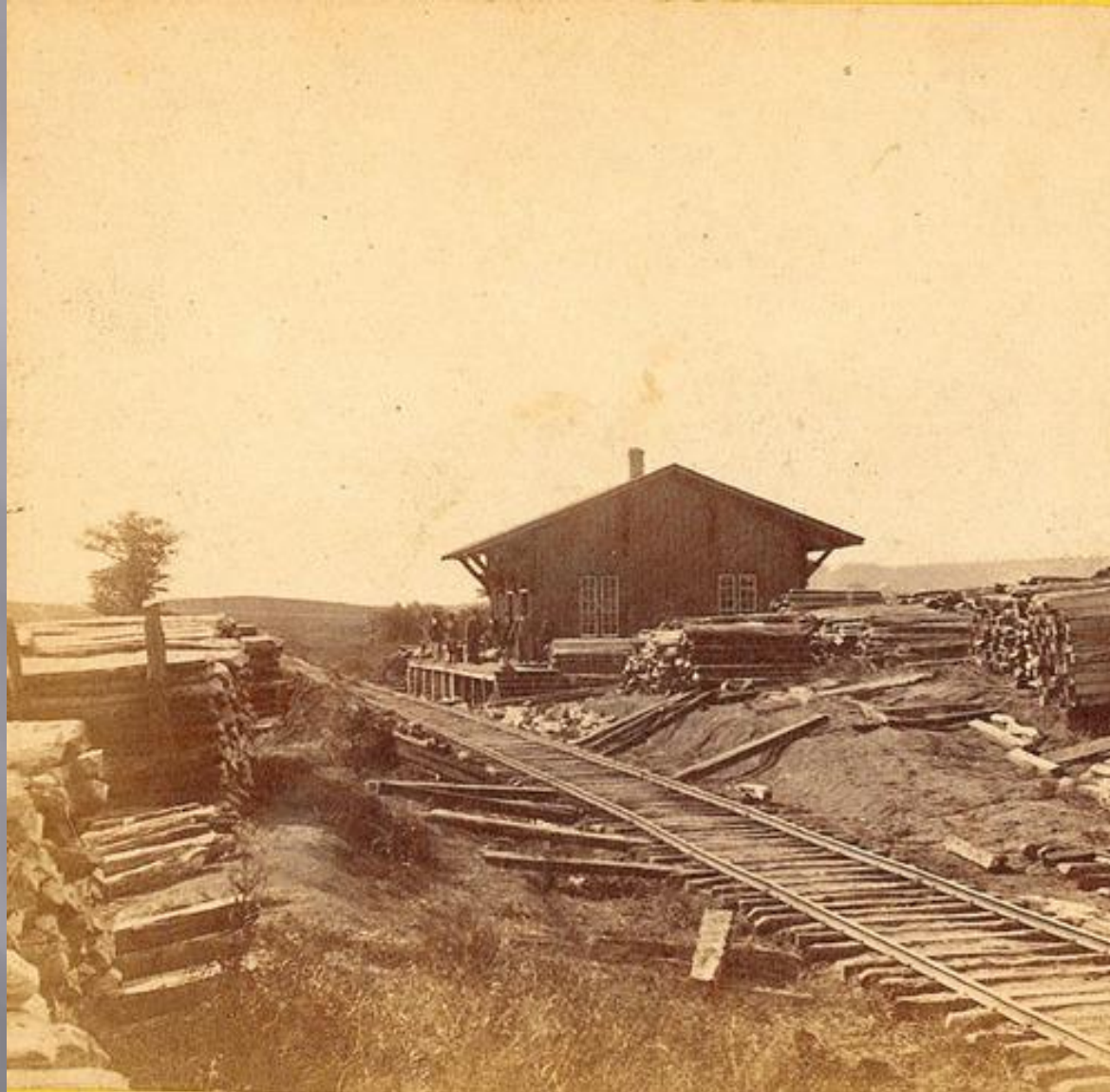




Alexander Gardner's wet-plate prep / developing mobile darkroom, Kansas 1867.



**A rare specimen found on hill above Fort Riley, Kansas. 420 miles west of St. Louis Mo.** One side of a stereograph showing two unidentified men looking at a plant specimen near Fort Riley, Geary County, Kansas. The men are next to Alexander Gardner's photographic outfit.



Depot Tonganoxie on branch road between Lawrence & Leavenworth, Kansas. 300 miles west of St. Louis Mo. One side of a stereograph showing the railroad depot at Tonganoxie, Leavenworth County, Kan. Visible in the photograph are people standing on the depot platform and stacks of wooden railroad ties..



Ox team at Tonganoxie, on branch road between Leavenworth and Lawrence, Kansas 1867



Tonganoxie, on branch road between Leavenworth and Lawrence, Kansas 1867



View at Tonganoxie, on branch road between Leavenworth and Lawrence, Kansas 1867



Tonganoxie farm, on branch road between Leavenworth and Lawrence, Kansas 1867



View of prairie near Tonganoxie, on branch road between Leavenworth and Lawrence, Kansas 1867



House and well where Jim Lane shot Capt. Jenkins, Lawrence, Kansas. 323 miles west of St. Louis, Mo. 1867.



Moore's Summit, Kansas, on branch road between Leavenworth and Lawrence, Kansas 309 miles west of St. Louis Mo. 1867.



View from Moore's Summit, Kansas, on branch road between Leavenworth and Lawrence, Kansas 309 miles west of St. Louis Mo. 1867.



View of prairie from Moore's Summit, Kansas, on branch road between Leavenworth and Lawrence, Kansas 1867.



Cattle yard at Moore's Summit, Kansas, on branch road between Leavenworth and Lawrence, Kansas 1867.



View embracing 12 miles of prairie from Moore's Summit, on branch road between Lawrence & Leavenworth 1867



Leavenworth, Kansas. 309 miles west of St. Louis, Mo. 1867.



View from Moore's Summit, on branch road between Lawrence & Leavenworth, Kansas 1867.



View in Salt Creek Valley, near Leavenworth, Kansas. 309 miles west of St. Louis, Mo. 1867

**The End**